

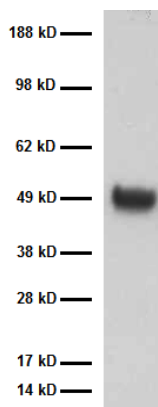
PEDF-AB (goat) 1000 µg (Polyclonal Antibody to Pigment- Epithelium Derived Factor)

CATALOG NUMBER: AB-PEDF6

LOT NUMBER: 201003

QUANTITY: 1000 µg

- SOURCE:** PEDF Antibody is an affinity purified goat polyclonal antibody raised against purified human PEDF (pigment epithelium derived factor) protein.
- RECONSTITUTION:** Reconstitute lyophilized PEDF Antibody in **1000 µL** d.i. H₂O
- CONCENTRATION:** 1 mg/mL in PBS after reconstitution.
- PURITY AND STERILITY:** PEDF Antibody has been shown to be > 90% pure by SDS-PAGE. PEDF Antibody is provided in a non-sterile solution. The product may be rendered sterile by 0.22 micron filtration. **NOTE: THIS PRODUCT IS FOR RESEARCH USE ONLY. NOT FOR USE IN CLINICAL OR DIAGNOSTIC PROCEDURES**
- SPECIFICITY:** PEDF Antibody reacts specifically with PEDF by Western blotting. Recommended dilution range for Western blot analysis: 1:1,000-1:10,000. Recommended starting dilution: 1:5,000.
- STORAGE AND HANDLING:** Store lyophilized sample at -20°C prior to reconstitution. Once the antibody has been reconstituted, store at 4°C. **DO NOT FREEZE.** Product is stable for one year from date of shipment.
- BACKGROUND:** Pigment epithelium-derived factor (PEDF) is a protein that acts in neuronal differentiation and survival in cells derived from the retina and CNS. PEDF inhibits angiogenesis and its expression is down-regulated over the replicative lifespan of mammals. This interesting factor is secreted by retinal pigment epithelial cells into the interphotoreceptor matrix, where it acts on photoreceptor cells. PEDF receptors have been localized to photoreceptors, those cells that are protected from light-induced damage and apoptosis. PEDF promotes neuronal survival through activation of NFκappaB,



Western immunoblot detection of purified human PEDF protein (1 ug). PEDF-AB (goat) primary antibody (1:5,000 dilution) and HRP-conjugated donkey anti-goat IgG secondary antibody (sc-2004, Santa Cruz Biotechnology, 1:5,000 dilution); ECL (Amersham) detection; 5 sec exposure.

which in turn induces expression of anti-apoptotic and/or neurotrophic factor genes. Its importance in the development, maintenance, and function of the retina and CNS is evident in animal models for inherited and light-induced retinal degeneration, as well as for degeneration of spinal cord motor neurons, and animal models for diseases triggered by choroidal and retinal neovascularization. PEDF is a member of the serpin superfamily of protease inhibitors, but it has characteristics of a substrate rather than an inhibitor of serine proteases. An N-terminus peptide region provides the neurotrophic function to the PEDF protein while other structural characteristics are dispensable (e.g. signal peptide, oligosaccharides on the polypeptide backbone, serpin exposed loop).

REFERENCES:

- Becerra SP. (1997) Structure-function studies on PEDF. A noninhibitory serpin with neurotrophic activity. *Adv Exp Med Biol*, **425**, 223-237.
- Dawson DW, Volpert OV, Gillis P, Crawford SE, Xu H, Benedict W, Bouck NP. (1999) Pigment epithelium-derived factor: a potent inhibitor of angiogenesis. *Science*, **285(5425)**, 245-248.
- Cayouette M, Smith SB, Becerra SP, Gravel C. (1999) Pigment epithelium-derived factor delays the death of photoreceptors in mouse models of inherited retinal degenerations. *Neurobiol Dis*, **Dec;6(6)**, 523-532.
- Duh, EJ, Yang, HS, Suzuma, I, Miyagi, M, Youngman, E, Mori, K, Katai, M, Yan, L, Suzuma, K, West, K, Davarya, S, Tong, P, Gehlbach, P, Pearlman, J, Crabb, JW, Aiello, LP, Campochiaro, PA, and Zack, DJ. (2002) Pigment epithelium-derived factor suppresses ischemia-induced retinal neovascularization and VEGF-induced migration and growth. *Invest Ophthalmol Vis Sci*, **43**, 821-829.
- Houenou, LJ, D'Costa, AP, Li, L, Turgeon, VL, Enyadike, C, Alberdi, E, and Becerra, SP. (1999) Pigment epithelium-derived factor promotes the survival and differentiation of developing spinal motor neurons. *J. Comp Neurol*, **412**, 506-514.
- Jablonski, MM, Tombran-Tink, J, Mrazed, DA, and Iannaccone, A. (2000) Pigment epithelium-derived factor supports normal development of photoreceptor neurons and opsin expression after retinal pigment epithelium removal. *J. Neurosci*, **20**, 7149-7157.
- Mori, K, Gehlbach, P, Ando, A, McVey, D, Wei, L, and Campochiaro, PA. (2002) Regression of ocular neovascularization in response to increased expression of pigment epithelium-derived factor. *Invest Ophthalmol Vis Sci*, **43**, 2428-2434.
- Stellmach, V, Crawford, SE, Zhou, W, and Bouck, N. (2001) Prevention of ischemia-induced retinopathy by the natural ocular antiangiogenic agent pigment epithelium-derived factor. *Proc Natl Acad Sci USA*, **98**, 2593-2597.
- Yabe, T, Wilson, D, and Schwartz, JP. (2001) NFkappaB activation is required for the neuronprotective effects of pigment epithelium-derived factor (PEDF) on cerebellar granule neurons. *J Biol Chem*, **276**, 43313-43319.
- Cao, W, Tombran-Tink, J, Elias, R, Sezate, S, Mrazed, D, McGinnis, JF. (2001) In vivo protection of photoreceptors from light damage by pigment epithelium-derived factor. *Invest Ophthalmol Vis Sci*, **42**, 1646-1652.

ORDERING INFORMATION:

100 µg	Catalog #AB-PEDF4	\$ 250
500 µg	Catalog #AB-PEDF5	\$ 850
1000 µg	Catalog #AB-PEDF6	\$ 1500

BioProducts MD

P.O. Box 790 • Middletown, MD 21769

Phone: 301-371-3100 • Fax: 301-371-5013

Email: info@bioproductsmd.com • Web: www.bioproductsmd.com