



Address: P.O. Box 790
Middletown, MD 21769
Phone: (301) 371 - 3100
Fax: (301) 371 - 5013
E-mail: info@BioProductsMD.com
Web: www.BioProductsMD.com



α-p24 Antibody

(RABBIT; POLYCLONAL; AFFINITY PUR.)



CATALOG NO.: HIV-P24



LOT. NO.: 201123



QUANTITY: 100 µg



SOURCE:

α-p24 Antibody is an affinity purified rabbit polyclonal antibody raised against synthesized p24 peptide.

Epitope: CGQMREPRGSDIA



RECONSTITUTION:

Reconstitute lyophilized α-p24 Antibody in 100 µL diH₂O.



CONCENTRATION:

1.0 mg/mL after reconstitution.



PURITY & STERILITY:

α-p24 Antibody has been shown to be >90% pure by SDS-PAGE. α-p24 Antibody is provided as a non-sterile sample. The product may be rendered sterile by 0.22 µm filtration after reconstitution.

Note: This product is for research use only.

Not for use in clinical or diagnostic procedures.



SPECIFICITY:

α-p24 Antibody reacts specifically with HIV-1 Group-M p24 by Western Blotting. Recommended dilution range for Western analysis: 1:1,000 – 1:10,000. Recommended starting dilution: 1:5,000.



STORAGE & HANDLING:

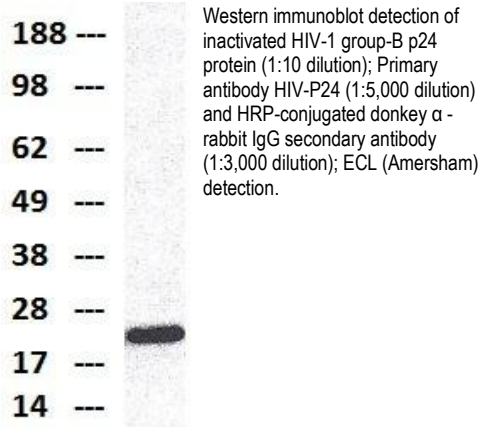
α-p24 Antibody is shipped at ambient temperature. This product is stable for at least 1 year following receipt. Once the antibody has been reconstituted, store at 4°C.

Do Not Freeze!



BACKGROUND:

HIV-1 Gag p24 is a capsid protein that constitutes the core of AIDS virus HIV-1 and is produced by the digestion of its precursor Gag p55 by HIV-1 protease. This protein is indispensable to the reproduction of AIDS virus and constitutes an essential element for the AIDS virus particle construction. As this protein is detectable from the early stage of AIDS virus infection, it is used as a marker for observation of the development in the patient's condition after treatment, as it indicated the amount of virus in the blood.



HIV-1 p24 protein is derived from a precursor polyprotein of HIV, p55, that is cleaved into shorter polypeptides namely p24 (core), p17 (matrix) and p7/p9 (nucleocapsid) proteins. The p24 protein is nonglycosylated and is of approximately 24 kDa size.

▶ REFERENCES:

- 1) Throm RE et al. Efficient construction of producer cell lines for a SIN lentiviral vector for SCID-X1 gene therapy by concatemeric array transfection. *Blood* 113:5104-10 (2009). WB.
- 2) Gaskill PJ et al. Human immunodeficiency virus (HIV) infection of human macrophages is increased by dopamine: a bridge between HIV-associated neurologic disorders and drug abuse. *Am J Pathol* 175:1148-59 (2009). ICC/IF.
- 3) Lenassi M et al. HIV Nef is secreted in exosomes and triggers apoptosis in bystander CD4+ T cells. *Traffic* 11:110-22 (2010). WB.
- 4) Su B et al. Enhancement of the influenza A hemagglutinin (HA)-mediated cell-cell fusion and virus entry by the viral neuraminidase (NA). *PLoS One* 4:e8495 (2009). WB.
- 5) King CA et al. Human cytomegalovirus modulation of CCR5 expression on myeloid cells affects susceptibility to human immunodeficiency virus type 1 infection. *J Gen Virol* 87:2171-80 (2006).
- 6) Fenard D et al. Uracil DNA Glycosylase 2 negatively regulates HIV-1 LTR transcription. *Nucleic Acids Res* 37:6008-18 (2009). WB.

▶ ORDERING:

Cat. No.: HIV-P24 (100 μ g) α -p24 (Rabbit) Antibody



Address: P.O. Box 790
Middletown, MD 21769

Phone: (301) 371 - 3100

Fax: (301) 371 - 5013

E-mail: info@BioProductsMD.com

Web: www.BioProductsMD.com